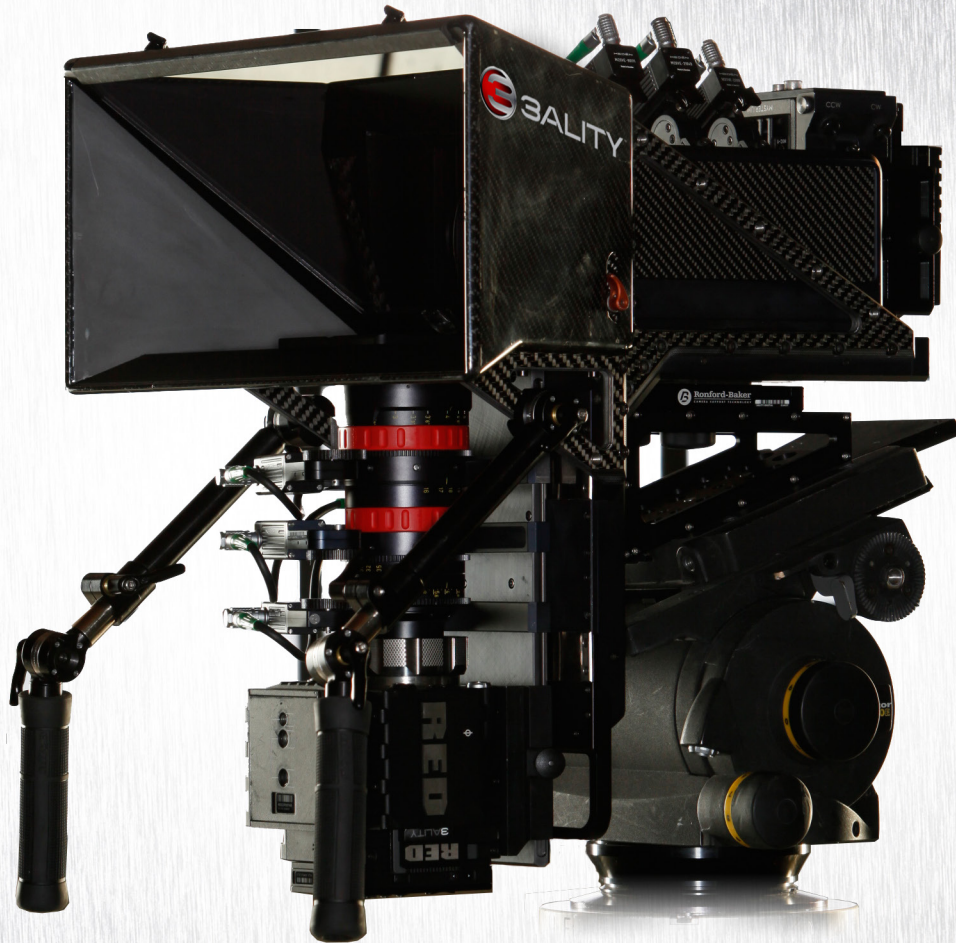


# Small Wonder



## TS-5

3D Production Rig

PERFECTLY ALIGNED WITH YOUR IMAGINATION



# TS-5

## Technical Data

3ality's TS-5 miniature beam-splitter offers the ultimate in both flexibility and precision. At a mere 17 pounds, the TS-5 can be used as a handheld, mounted on a Steadicam®, and will fit into those tight places that seem too small for 3D. The TS-5 uses 3ality's proprietary software to provide quick and accurate set-ups, camera alignments that stay aligned, and matching zooms and smooth tracking on every shot.

### DIMENSIONS

Overall Length	425 mm (17")
Width - Small Mirror Box	342 mm (13.5")
Large Mirror Box	420 mm (16.5")
Height	406 mm (16")
Frame Width	245 mm (10")

### INTERAXIAL RANGE

Symmetrical camera movement 0" to 2" each  
total 0" to 4" (100 mm)

### CONVERGENCE RANGE

Convergence each camera	-1° to 3°
Min. Convergence Distance @ 3°	2 ft

### CAMERA TYPE

Sony HDC-P1	RED Epic
Sony T-Head Cameras	RED Scarlet
Ikegami HDL-51	RED Dragon
Panasonic Box AK-HC1500G	

Height of optical center + camera mount 65 mm

### LENS TYPE

MAX. FRONT LENS DIAMETER	
Small Mirror Box	50 mm
Large Mirror Box	90 mm

### FOCAL LENGTH

SMALL MIRROR BOX	
2/3" Imager	7 mm to + 100 mm
Super 35 Imager	20 mm to + 100 mm

### LARGE MIRROR BOX

Super 35 Imager	20 mm to + 250 mm
-----------------	-------------------

### HEIGHT/PITCH ADJUSTMENT

Height Range	± 7.5 mm (15 mm total)
Pitch Range	± 3°

### ROTATION

Camera roll axis (turn round centerline)	± 2°
--	------

### ACCURACY

PLANE FLATNESS	
Absolute rail deviation end to end	± 0.05 mm

### HEIGHT PITCH UNIT

Drive Accuracy	3 μm
Encoder Accuracy	0.5 μm

### INTERAXIAL DRIVES

Drive Accuracy	3 μm
Encoder Accuracy	0.5 μm

### ENCODER

Operating Temperature Range	0°C to 55°C 32°F to 131°F
-----------------------------	------------------------------

### FEEDBACK METHOD

Linear encoder, on final stage (post gearing, etc.)

### DRIVE SPEED

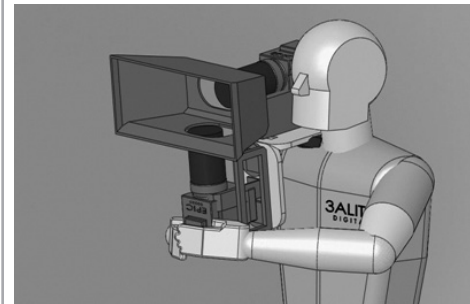
Interaxial	50.8 mm/s (2"/s)
------------	------------------

### LOADS AND WEIGHT

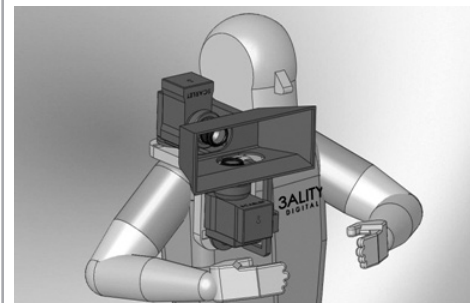
Rig weight w/o camera	10 kg (22 lbs)
-----------------------	----------------

### POWER REQUIREMENTS

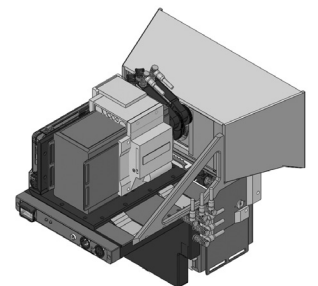
Voltage supply to Rig	12-18V DC @ 4.5A
-----------------------	------------------



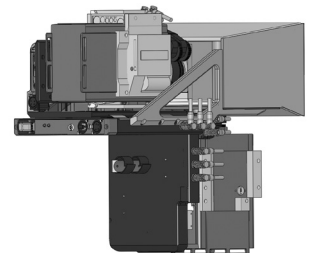
SHOULDER-MOUNTED  
FLEXIBILITY



COMPACT, LIGHT & PORTABLE



ACCOMMODATES MULTIPLE  
CAMERAS AND LENSES



SHOOT 3D ON A 2D SCHEDULE

